

# dsmPlayer

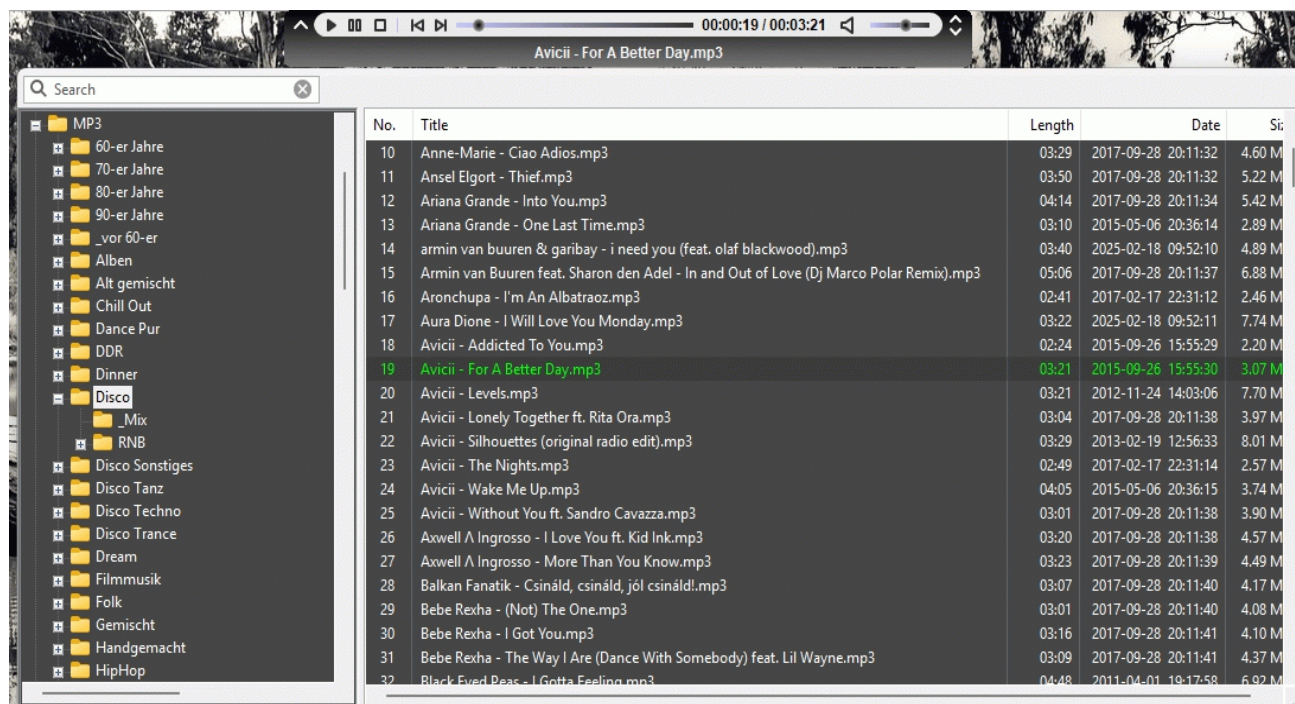
License: GPLv2

Dirk Noack

dirk.noack@wxbasic.de

<https://www.wxbasic.net>

<https://www.forum.wxbasic.de>



dsmPlayer (Duckes simple Media Player) is a small player for playing music and TV both from local files and by streaming from the Internet. It was written entirely in wxBasic and uses for playback from version 0.3 Phiola (<https://github.com/stsaz/phiola>). Please note the restrictions and warnings in the Phiola description.

At the moment only Microsoft Windows OS is supported.

It is not software for managing music collections and was not developed for this purpose. The focus is on playing radio streams without annoying windows.

dsmPlayer was originally developed as a widget for Mhm, a hidden menu program (<https://forum.wxbasic.de/index.php?topic=155.0>), and is now available here as a stand-alone application.

In contrast to previous versions, all control elements are now drawn in the program itself. This means that external icons are no longer required.

A SQLite database with the name "IPTV.db" is used to store the Internet radio and TV stations. By default, the program uses a basic Kodi station list from Ink22's Github repository (<https://github.com/jnk22/kodinerds-iptv>). This has been extended by a few radio stations, some of which unfortunately do not have icon addresses.

The default setting contains approx. 700 radio stations and approx. 330 TV stations. However, the station lists can be expanded to approx. 28,000 radio stations and 10,000 TV

stations from all over the world. The Github repositories from Junguler (<https://github.com/junguler/m3u-radio-music-playlists>) for radio stations and from IPTV-Org (<https://github.com/iptv-org/iptv>) and Free-TV (<https://github.com/Free-TV/IPTV>) for TV stations are used for this purpose.

An IPTV station list contains music and TV addresses together. dsmPlayer splits the lists and uses separate lists for TV and radio for a better overview. To do this, the player uses the specific names of the above-mentioned station lists. This does not necessarily work with other IPTV lists, as each usually uses its own names.

Kodi IPTV lists do not support genres. However, genres are supported in dsmPlayer, so that you can also customize the genres after the import.

If you want to create a new database, delete the existing database. A new database will be created the next time you start the program.

Since wxBasic itself does not support HTTPS, GNU Wget is used as the download program (<https://www.gnu.org/software/wget/>). Wget is not included in dsmPlayer and must be installed separately.

dsmPlayer uses other free software for certain actions (included in the package):

- Phiola (64 bit only)

Phiola is used as a background program for playback, reading the metadata of radio streams, recording radio stations, format conversion, normalizing files and editing ID3 tags.

The advantages are faster loading and playback, more flexibility and less memory consumption.

The disadvantage is that with remote access the volume is no longer in real time, but slightly delayed.

But I don't think this is that important.

- mp3DirectCut (<https://mpesch3.de>)

mp3DirectCut can be used edit your mp3 or aac files. However, another program can also be selected.

Further features:

- Plays local files, Internet radio and acts as a helper for playing TV over the Internet
- Plays aac, flac, mp3, m4a, ogg, opus, wav, wv, mpc
- Plays sound stream from mkv, webm, mp4, mov, avi and ts
- Plays popdcasts and can download them, if this is allowed
- Free positioning of the station list on the screen
- Recording tracks from the Internet Radio
- Autoplay at startup
- Minimization in the tray
- Hiding the player
- Favorites list for Internet radio
- Export Internet playlists
- Validate Internet playlists
- Sort Internet playlists

- Displaying station logos
- Search for stations in the station list
- Reading local playlists
- Track mix for local playlists
- Deleting local titles
- Batch renaming of local tracks (2 versions)
- Batch conversion to mp3, aac, ogg, opus, flac, m4a and wav
- Batch normalization of mp3, ogg, opus and flac
- Editing of ID3 tags in mp3, ogg and flac
- Saving the Internet playlists in a database
- Multilanguage support (currently only English and German)
- Portable, only one configuration is saved in the program directory

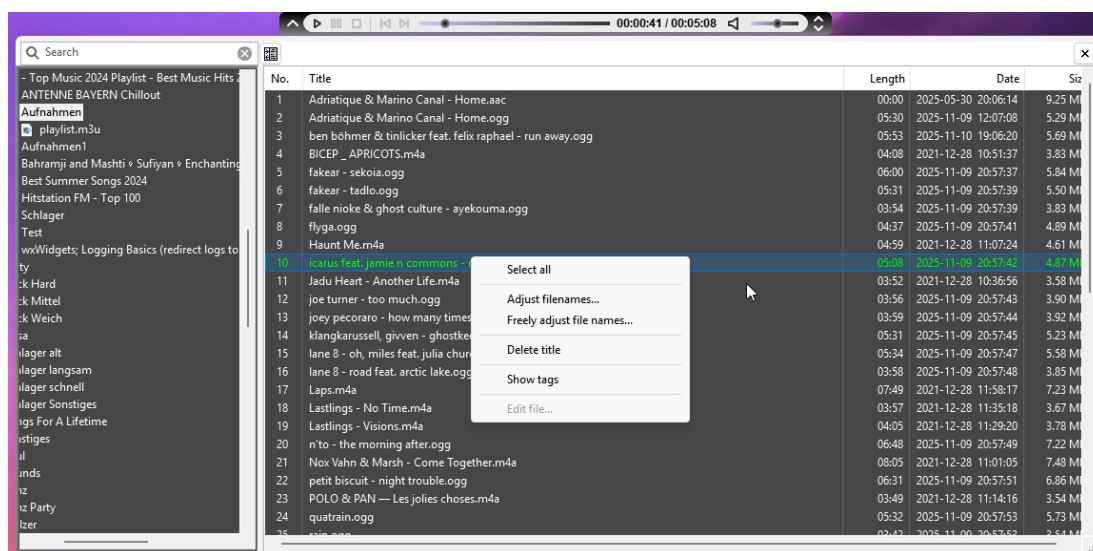
### To do:

- More options for recording (dependent on Phiola)
- Time-based recording of podcasts

### Restrictions:

- Only 1 genre can be specified per station. If more than one genre applies to the station, the station with the other genre must be added.
- Phiola is currently only available as a 64 bit program.
- The AAC timestamps can be very inaccurate. The m4a format is recommended.
- Podcast support is still experimental and works best with XML-based podcasts. Linked podcasts from non-original sites often cannot be played correctly. This also applies to many HTML-based podcasts, as well as podcasts from providers that have their own playback options or require registration, e.g., Amazon Music, Mixcloud, SoundCloud, Deezer, etc.

## 1. The playlist



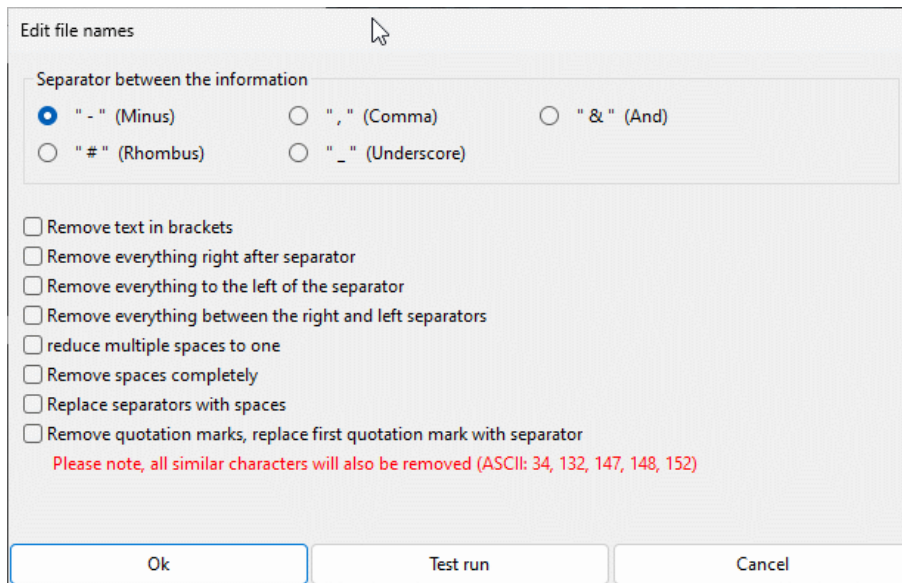
The playlist is shown or hidden using the left arrow in the player.

In file mode, dsmPlayer works as a directory player. You can click through the individual directories and play files. It also supports m3u playlists.

A menu can be called up with the right mouse button. The following actions are

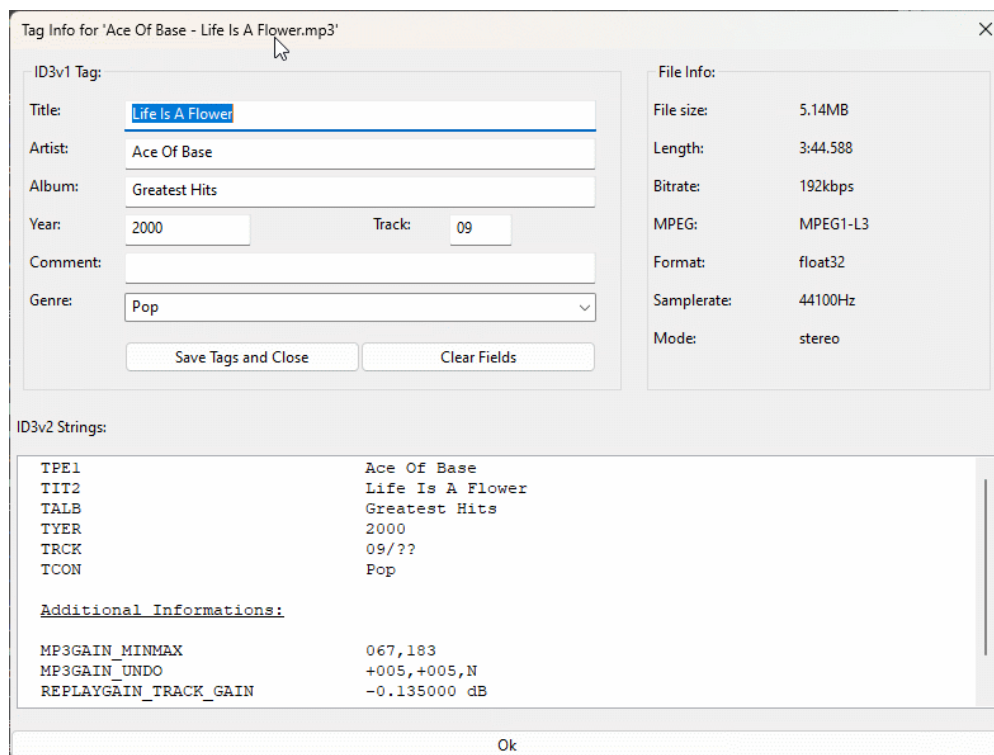
possible here:

- Select all
- Customize file names (selected files)



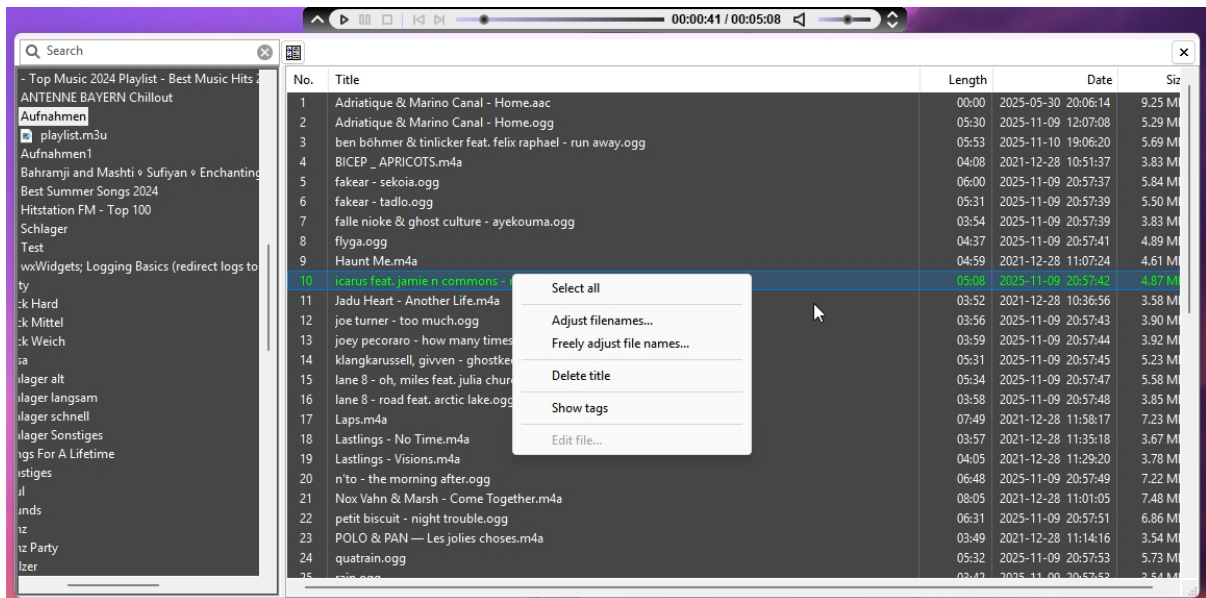
Various options for batch renaming the selected files are available here. A test run can be carried out before applying the changes. This gives you the opportunity to adjust the settings again if they are missing.

- Freely customize file name (current file only)
- Delete title (**Attention! The file cannot be restored!**)
- Show and edit Tags...



- Open for editing  
Open the selected file for editing with your preferred editing program.

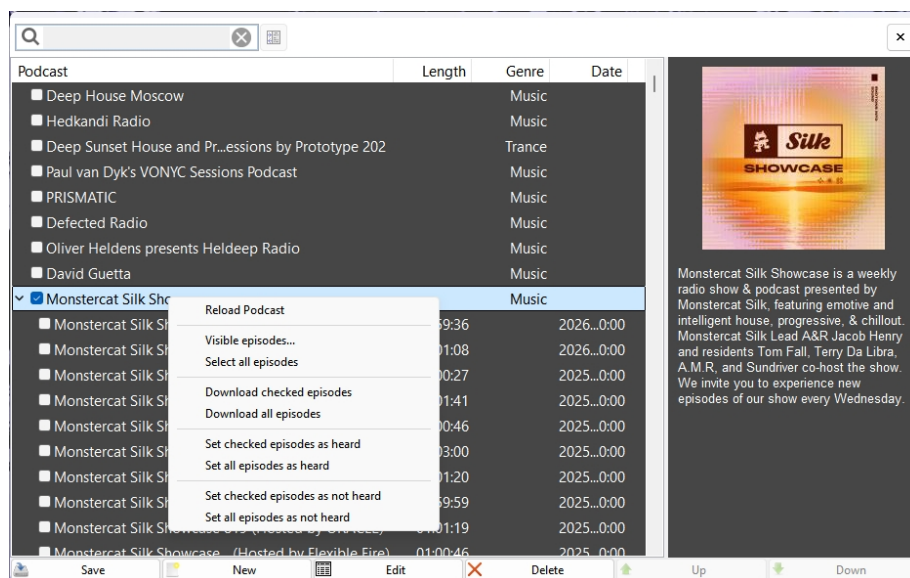




In web mode, the country code, station name and genre are displayed. There are 2 further columns for the station url and the icons. These columns are hidden by default, i.e. their column width is set to 0, as they are not normally required.

In edit mode, you can use the right mouse button to cut the selected stations and paste them elsewhere. You also have access to the favorites.

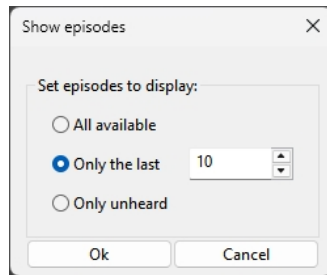
In podcast mode, various actions are available for the podcast:



## Reload episodes

Reloads the podcast, including all episodes

## Episodes to display



There are several ways to view the episodes:

- a) Show all available episodes
- b) Show only the last n episodes
- c) Show only unheard episodes

## Select all episodes

Select all episodes of the podcast.

## Download checked episodes

Checked episodes will be downloaded, unless they are blocked.

## Download all episodes

All episodes will be downloaded unless they are blocked. This only applies to episodes visible in the window.

## Set checked episodes as heard

Set the selected episodes as heard. A new database, "podcasts.db," will be created for this purpose.

## Set all episodes as heard

Set all displayed episodes as heard.

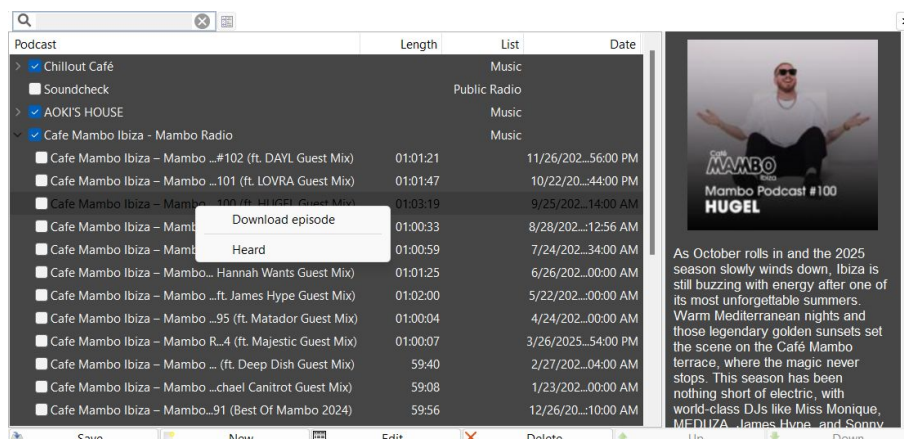
## Set checked episodes as unheard

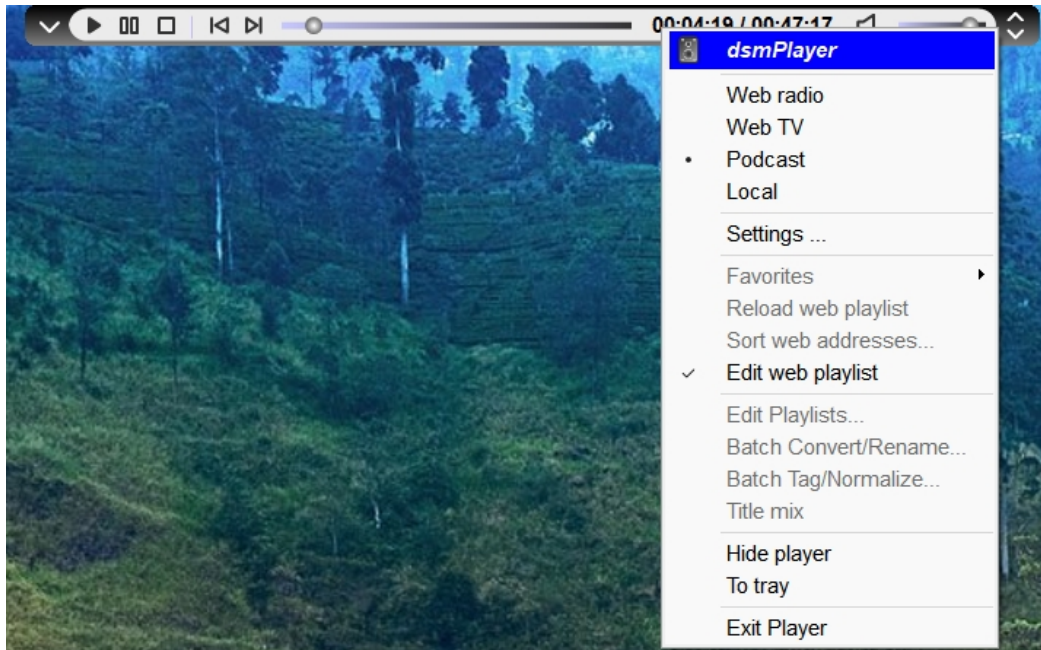
Set the selected episodes as unheard.

## Set all episodes as unheard

All episodes stored in the podcast.db will be marked as unlistened to.

In the episode menu, you can download the selected episode or set it as heard.





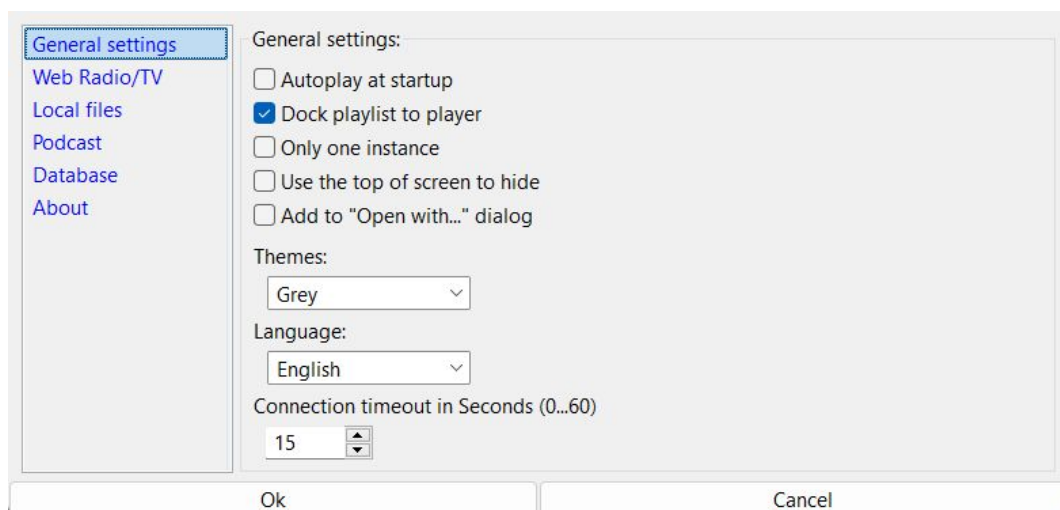
In the episode menu, you can download the selected episode or set it as heard.

## 2. The main menu

In the main menu, you can perform all important actions and choose between the different modes:

1. Web radio
2. Web TV
3. Podcast
3. Local files

### 2.1. Settings



### Automatic Playback on Startup

When enabled, dsmPlayer will resume playback from where it left off upon startup.

### **Dock Playlist to Player**

The playlist is shown or hidden using the left arrow in the player. Normally, the playlist can be freely positioned on the screen.

If this option is enabled, the playlist will be docked vertically to the player, and it can only be moved or resized horizontally.

### **One Instance Only**

When enabled, a warning message will appear if you attempt to start a second player. The attempt will then be aborted.

### **Use Top of Screen to Hide**

When enabled, the player can be hidden or shown with a mouse click at the top of the screen. A 1-pixel-high line will be drawn.

### **Add to "Open with..." Dialog**

Adds or removes dsmPlayer to or from the "Open with..." dialog in Windows. Administrator privileges are required.

### **Themes**

dsmPlayer currently supports 7 different themes:

- Dark
- Black & White
- Gray
- Green
- Blue
- Red and
- Brown

Choose a theme for the player.

### **Language**

dsmPlayer can support other languages. Currently, only English and German are implemented.

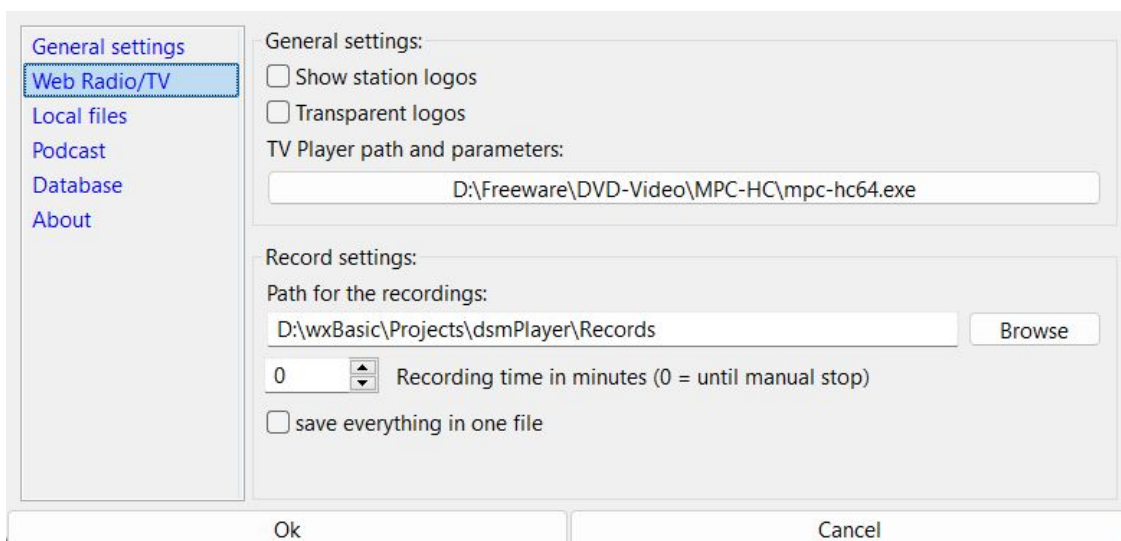
Please feel free to write a new language file for the player, and I will add it.



## Connection Timeout in Seconds

dsmPlayer attempts to establish a connection in web mode (web radio, podcasts) for the specified number of seconds.

If a connection cannot be established, the attempt is aborted.



## Show Station Logos

This option allows you to display the station logos. For speed reasons, these are not constantly downloaded from the station's website but are loaded from a zip file named "stationLogos.zip".

If the zip file is not present, standard radio and TV logos are used.

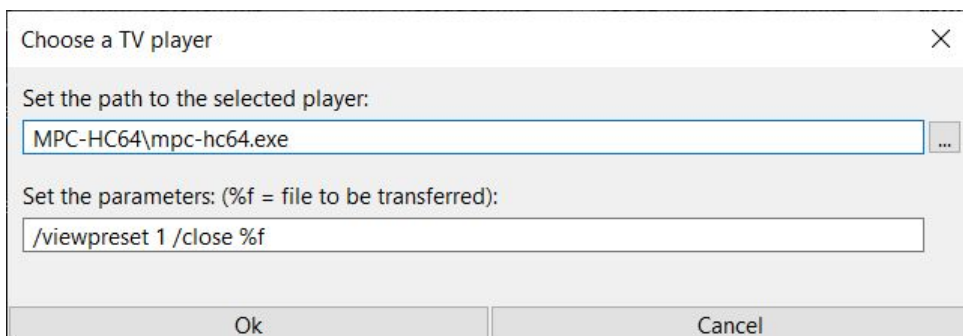
## Transparent Logos

When enabled, the station logos will have a transparent background. Otherwise, the background will be white.

## TV Player Path and Parameters

When watching web TV, dsmPlayer only acts as a helper and provides the channel lists. The actual program for watching the TV channels, including the necessary options, is specified here.

I recommend MPC-HC. In my (older) tests, this program proved to be the most stable. However, you can, of course, choose any program you prefer.



## Recording Settings

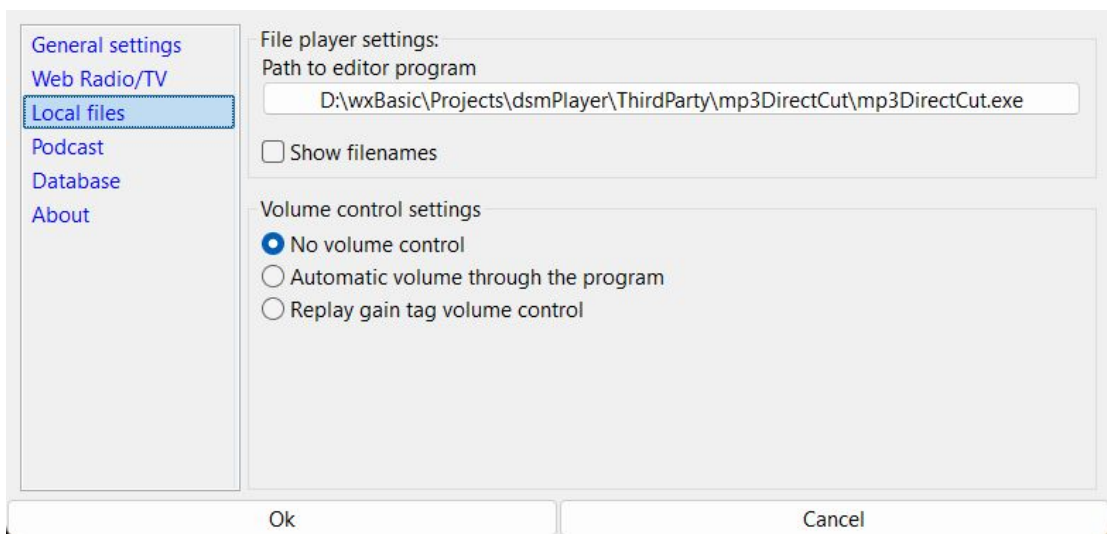
Here you can specify the path for the recordings.

You can also specify a recording duration. This will then end automatically after the specified time.

Zero value means recording will continue until you stop it manually.

The recording will be in the "Artist - Title" format.

If "Save everything in one file" is enabled, the recording will be in the format "current date - current time" until you stop it.



## Path to Editor Program

Here you specify the path to your preferred editor for music files, including the required parameters and editable file types. Otherwise, files will not open for editing.

The default is mp3DirectCut. However, you can choose any other program that supports opening files via the command line.

## Show File Names

When enabled, the names of the currently played files are displayed in the player without showing the entire playlist. The player window is slightly enlarged to display these files.

## Volume Adjustment

Three volume adjustment options are available:

### 1. No Volume Control

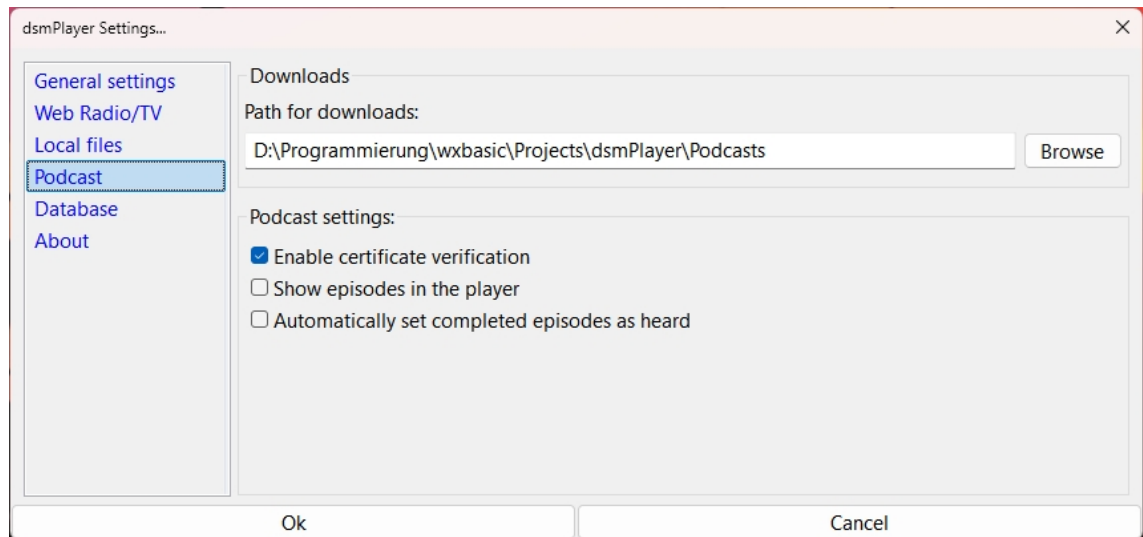
The files are played as saved. Gain tags are ignored.

## 2. Automatic Volume

Phiola automatically controls the volume.

## 3. Adjustment Based on Replay Gain Tag

The volume is adjusted according to the file's Replay Gain tag.



### Path for downloads

Specify the download path here.

A separate directory is created for each podcast, and the episode is saved there.

### Enable Certificate Verification

Some websites may not have a valid certificate. Normally, a message will appear with the option to temporarily disable verification for that site.

To disable verification entirely, uncheck this box.

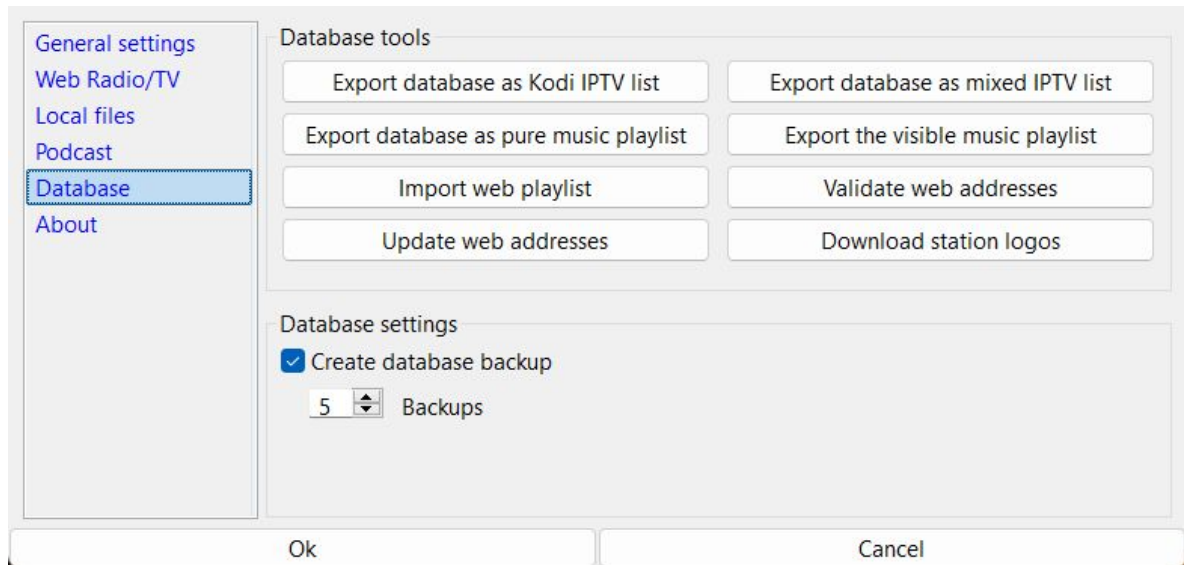
**Caution! Disabling verification can pose a security risk.**

### Show Episode in Player

Displays the name of the currently playing episode in the player, just like in file view.

### Automatically set completes episodes as heard

Once an episode has been listened to to the end, it is automatically marked as listened to.



The database tools combine various import and export options, validation and updates, and backups.

### **Save database as a Kodi IPTV list**

The dsmPlayer database has three separate station lists for TV, radio, and podcasts. When exporting to a Kodi station list, the radio and TV station lists are merged, and the genres are removed for Kodi compatibility. Station logos are retained.

### **Save database as a combined IPTV list**

Here, too, the TV and radio station lists are merged in Kodi format. However, the genres and station logos are retained.

### **Save database as a music playlist only**

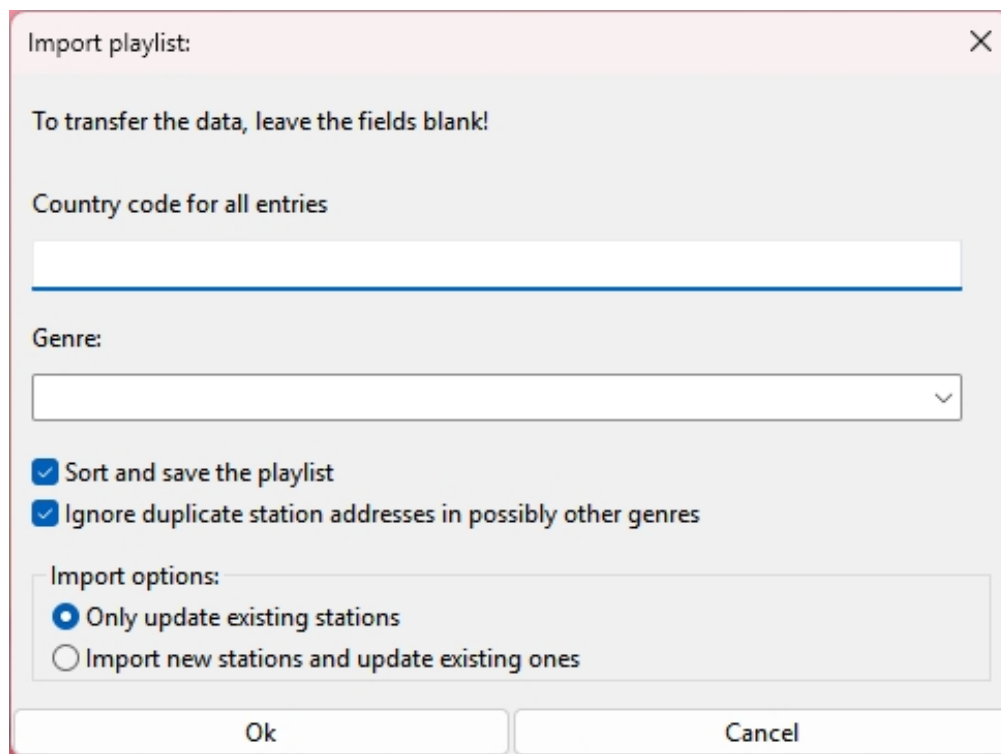
This option creates a standard m3u music playlist. Station logos are not saved. The TV and podcast station lists are ignored.

### **Export the visible music playlist**

You might have modified a playlist but don't want to include it in the database.

This option allows you to save the currently active (visible) playlist from the web radio to an m3u music playlist.

## Import Web playlist



Import playlist: [X]

To transfer the data, leave the fields blank!

Country code for all entries

Genre:

☒ Sort and save the playlist

☒ Ignore duplicate station addresses in possibly other genres

Import options:

☒ Only update existing stations

☐ Import new stations and update existing ones

Ok Cancel

At this point, you can import a single playlist.

Here, you can specify the country of origin and the genre.

If nothing is specified, the entry from the import list, if available, will be used.

There are 224 genres available. For simplicity, not all possible genres have been included, but only those with the most channels. This also applies to the countries. Please excuse this.

### - *Sort and save playlist*

Displays the Sort and Save dialog

### - *Ignore duplicate station addresses in possibly other genres*

If a station in the import list has a different genre than the one in the database, the station will be imported as a new station. This will result in duplicate station in the station list, but with different genres. This can be useful when sorting by genre.

If this option is enabled, it will be ignored.

### - *Update only existing channels*

If a station with the same name already exists in the import list, only the channel address and logo will be copied from the new list. New channels will be ignored.

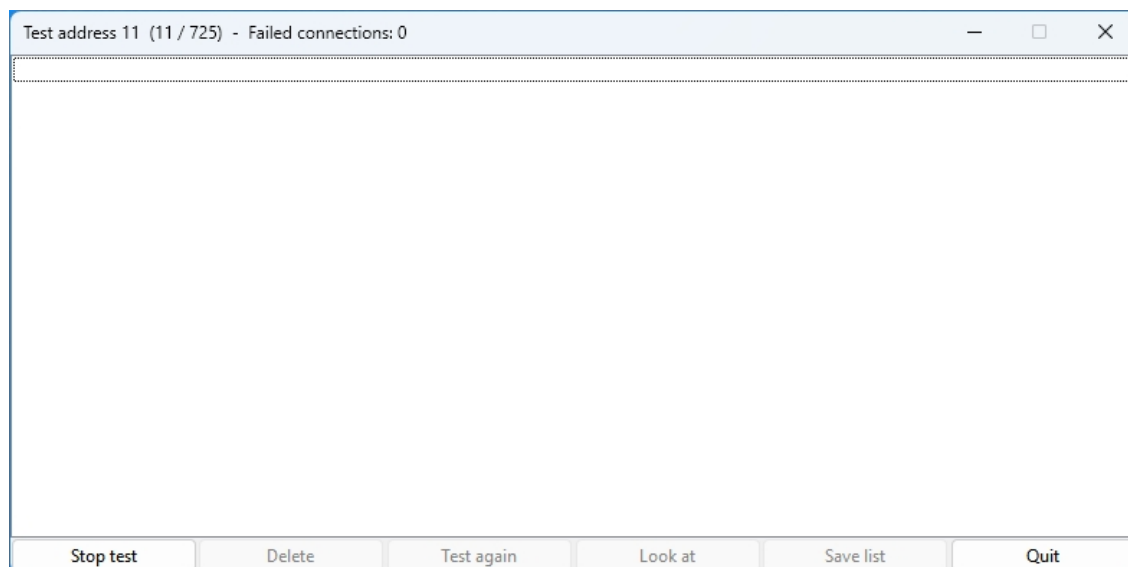
### - *Import new channels and update existing ones*

As before, new channels will be imported.



## Validate Web addresses

During address validation, an attempt is made to contact the sender according to the configured timeout. If no contact is established, the station is added to a list of failed stations. From there, the failed stations can be checked again.



Stop test

Delete

Test again

Look at

Save list

Quit

End test

Delete the channel from the channel list (**Caution!**)

Retest the selected channels in the list

Open the selected channel for editing

Save the list of failed channels as a text file

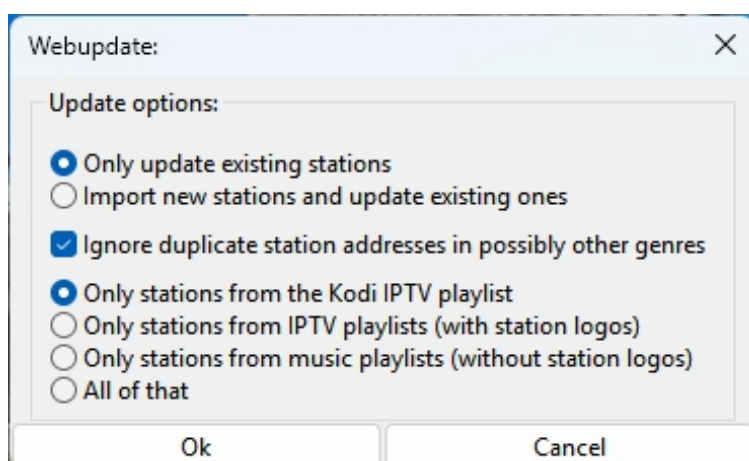
Stops the test and closes the window

Testing is performed only with the selected channels. If none are selected, all channels in the list are tested. This can take several hours depending on the size of the list.

**Caution! Testing the connection only provides a snapshot. Not all channels play at all times of day.**

**Deleting removes the channel from the channel list. To permanently remove a channel, it must be saved to the database.**

## Update Web addresses



Here you can update an existing playlist. The following settings are available:

- *Only update existing stations*

If a station with the same name already exists in the import list, only the station address and logo from the new list will be used. New stations will be ignored.

- *Import new stations and update existing ones*

Same as above, new stations will be imported.

- *Ignore duplicate station addresses in possibly other genres*

If the import of new stations has been enabled and a station in the import list has a different genre than the one in the database, the station will be imported as a new station. This will result in duplicate stations in the station list, but with different genres. This can be useful when sorting by genre.

- *Only stations from the Kodi playlist*

Only stations from the Kodi repository will be updated.

- *Only stations from IPTV playlists (with station logos)*

Only stations from IPTV playlists, which may also contain channel logos, will be updated.

- *Only stations from music playlists (without station logos)*

Only channels from music playlists that do not contain channel logos will be processed.

- *All*

It will update from all playlists.

**Warning! Updating will overwrite the database. Please create a backup of the database beforehand. dsmPlayer can handle this with the correct database backup settings.**

## **Download station logos**

Here you can download the station logos for the web radio playlist. They will be saved in a zip file named "stationLogos.zip".

This saves storage space when duplicate logos are used. If they were directly assigned to the station in the database, more logos than necessary would be stored.

After downloading, the logos are resized to 24x24 pixels and converted to PNG format. This PNG file is then saved in the zip file. This ensures all logos have the same format, which speeds up the loading process.

## **Create Database Backup**

Enable automatic database backups every time you save. You can configure the number of backups.

Backups are named with the extension ".bak" followed by a backup number.



Displays information about dsmPlayer.

## 2.2. **Favorites**

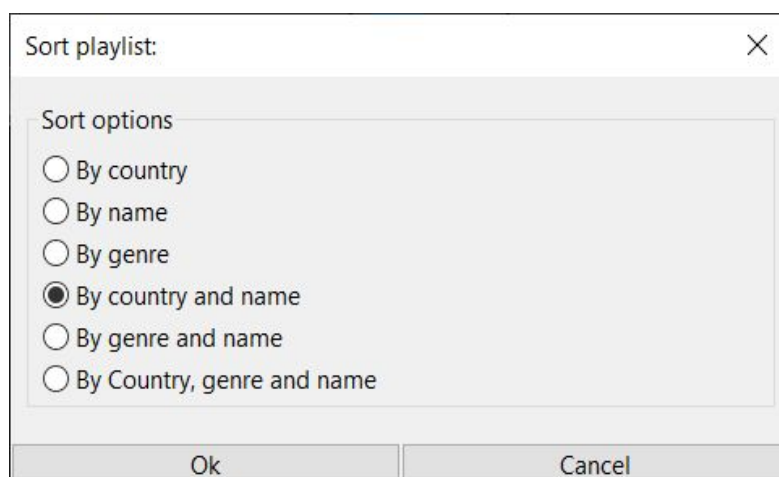
In the Favorites menu, you can easily jump to a station you have previously added or remove the selected station.

## 2.3. **Reload Web Playlist**

Reloads the station list from the database.

**Warning! All changes will be lost if they are not saved beforehand.**

## 2.4. **Sort Web addresses...**



The playlist can be sorted here according to predefined criteria. The following options are available:

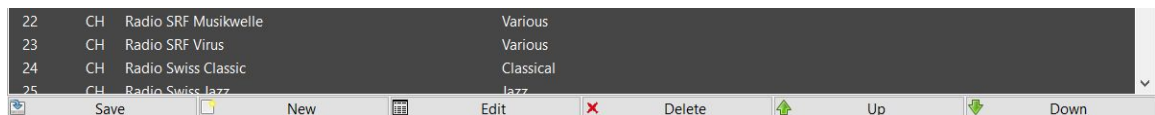
- Sort by country
- Sorting by station name
- Sorting by genre
- Sorting by country and station name
- Sorting by genre and station name
- Sorting by country, genre and station name

It is also possible to sort the list according to the column by clicking on a column heading.

### Attention:

For reasons of speed, the database is always used for sorting. For this reason, it is essential to save any changes previously made to the playlist. Otherwise they will be irrevocably lost!

## 2.5. Edit Web playlist



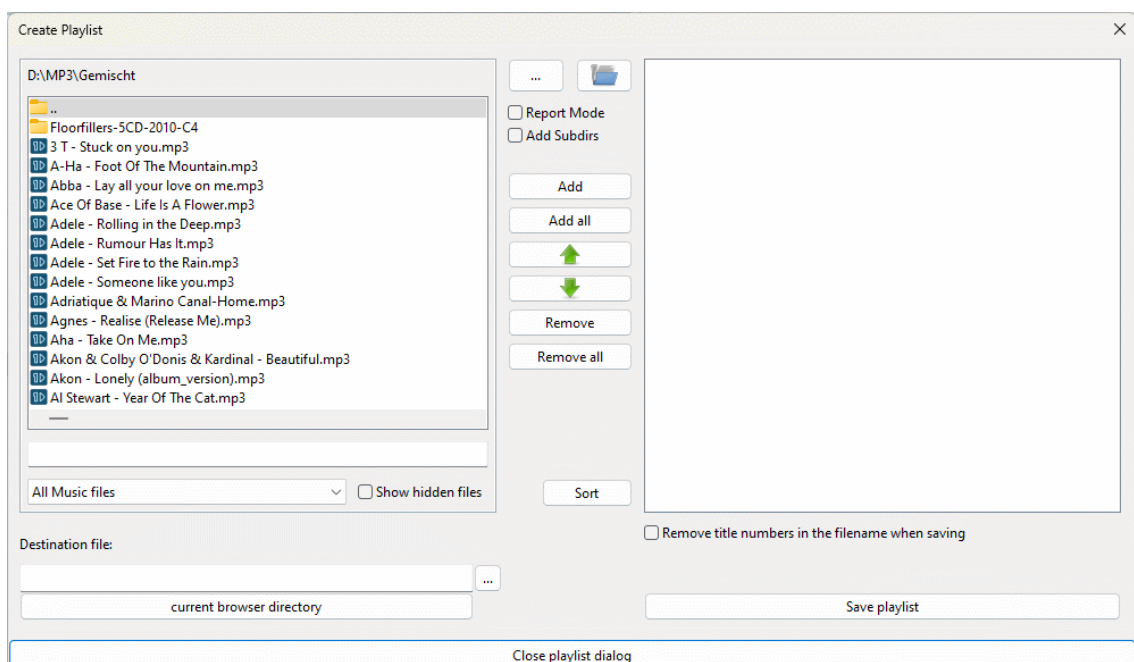
Displays buttons for editing the station lists of the web radio or web TV. This is also the only way to save the station list manually.

Save	Saves the station list
New	Creates a new station
Edit	Edit the selected station
Delete	Delete the selected stations
Up	Move the selected stations one up
Down	Move the selected stations one down

Stations can also be moved using drag and drop. Multiple selections are possible.

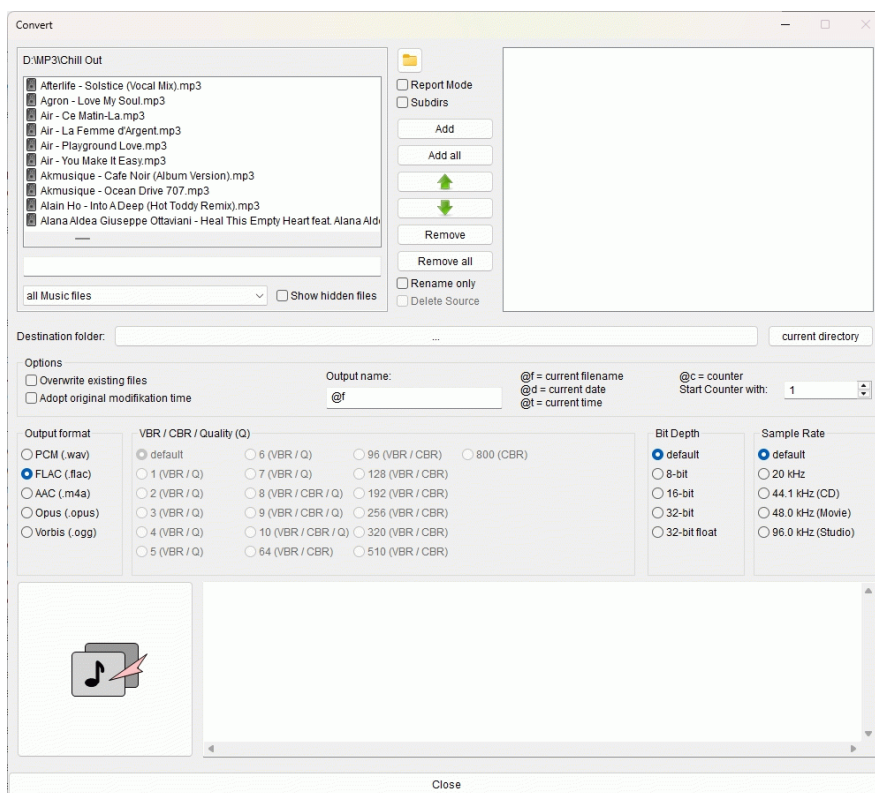
After editing the station list, it must be saved manually. Otherwise all changes (including sorting) will be lost!

## 2.6. Edit Playlists...



Here you can create or edit music playlists. At the moment only m3u playlists are supported. I think the functions are self-explanatory. Try it out.

## 2.7. **Batch Convert/Rename...**

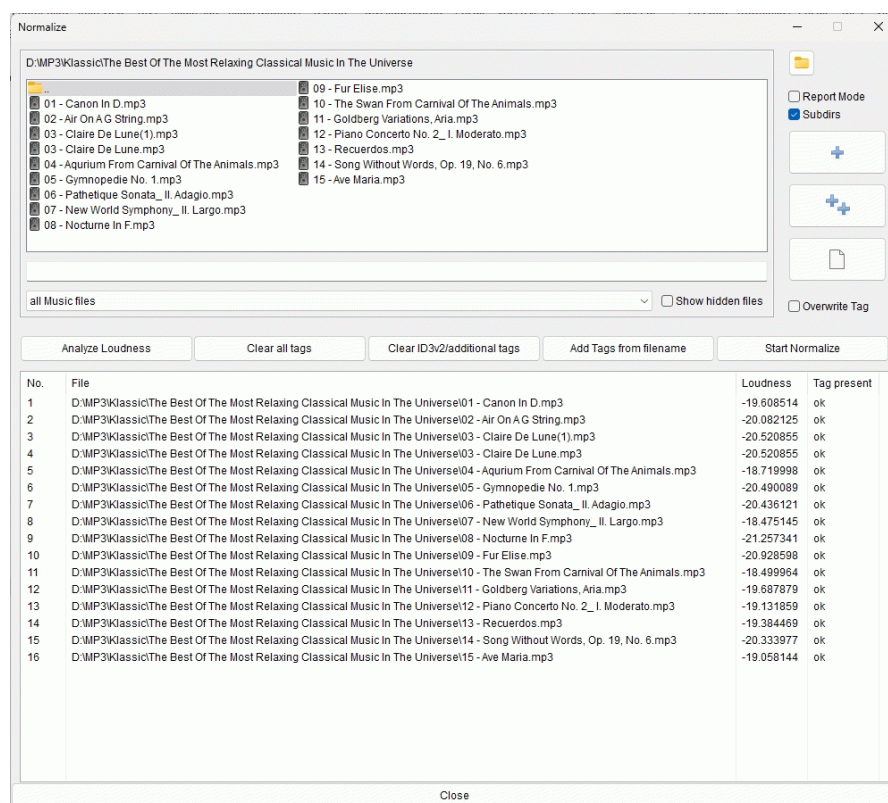


Select the files to be converted in the explorer window and add them to the task list. There are several setting options available. Placeholders can be used as output titles.

If “Rename Only” is selected, the selected files will only be renamed and copied or moved according to the destination name. In this case, no conversion will take place.



## 2.8. Btatch Tag/Normalize...

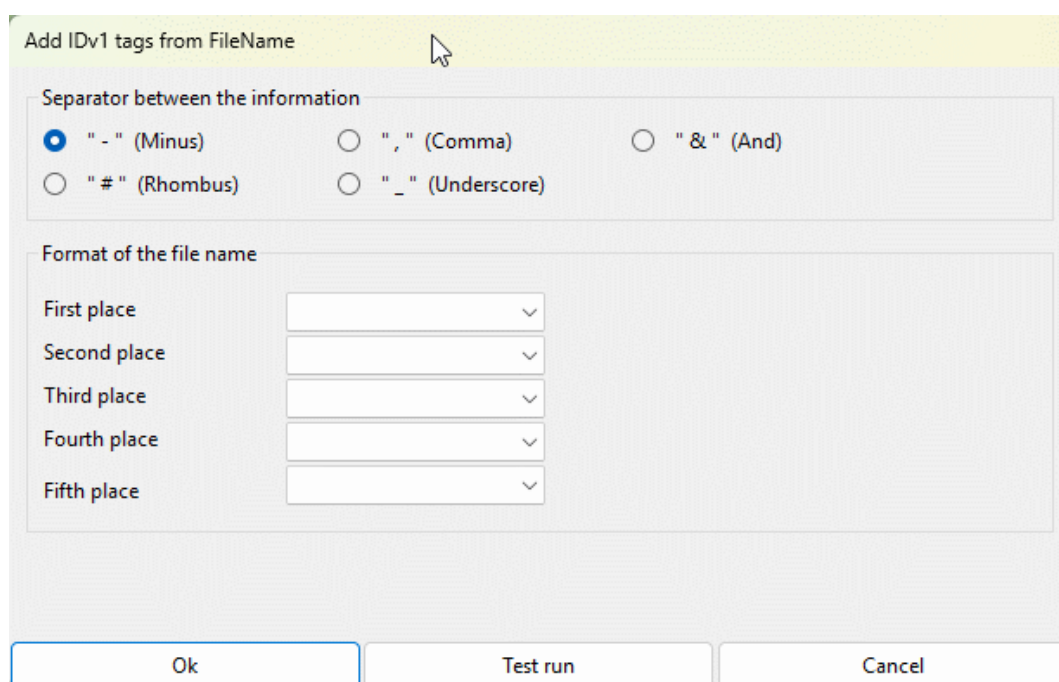


Select the files to be normalized in the explorer window and add them to the task list.

You can analyze the files and display the loudness. However, this does not affect the normalization process.

Here you can also delete all tags present in the files or only the ID3v2 and additional tags. In this case, all tags are deleted and the ID3v1 tags are written back.

You can also create new ID3v1 tags from the file name here.



The file names must use consistent separators. Up to 5 separators can be used for the tags. The order can be specified here.

If you want, you can do a test run. The tags to be written will then be displayed and you can check that they are correct.

“Start Normalize” starts the normalization process. Replay Gain is used, i.e. the file is analyzed and a corresponding tag is written into the file.

### **2.9. Title mix (file mode)**

Mixes up the order of the tracks.

### **2.10. Hide player**

This option hides the player so that you have the whole screen free. Nothing is displayed in the tray here either.

To bring it out, left-click anywhere at the top of the screen, if the option “Use top of screen” is selected or press the F10 key.

### **2.11. To tray**

This allows the player to be minimized to the tray. The most important actions are available in the tray menu.

### **2.12. Exit player**

Exits the player and saves the configuration.

## **3. Key assignment**

Some key assignments are preset for operation without a mouse.

Assignment system-wide:

Ctrl - p	play/stop playing
Pause	mute/unmute
Ctrl - Right	next track
Ctrl - Left	previous track
Ctrl - r	start/stop recording
Shift - F5	show/hide playlist
F10	show/hide player window

Assignment in the program (playlist):

- F1 - Bring the current track into the field of view
- F2 - Rename title (File Mode)
- F4 - Edit station (in edit mode)
- F7 - Add new station (in edit mode)
- Del - Delete station (in edit mode)
- Escape - Cancel selection(s)

#### **4. Note:**

As Phiola is currently only available in 64 bit, dsmPlayer is also only offered as a 64 bit application.

If the default setting contains radio stations that are not legally allowed to be offered, please let me know. I will then remove them from the database immediately.

#### **5. Disclaimer**

I have tested the program under Windows 10 and Windows 11. Nevertheless, errors may occur. If errors are found, please let me know.

This software is offered as is. Use at your own risk.

In no event shall the author (Dirk Noack) be liable for any damages whatsoever (including, without limitation, damages for loss of business profits, business interruption, loss of business information, or any other pecuniary loss) arising out of the use of or inability to use this software or documentation, even if the author has been advised of the possibility of such damages.